

SnapLyte Premium™

Graphic Display Lightbox

Showcase-grade, front-loading
aluminum backlit lightbox



FEATURES

- Premium-quality extruded aluminum construction
- Tool-free snap frame for quick graphics change
- Electronic ballasts for flicker/hum-free operation
- Substantive “boxy” look, for robust décor environments
- Precision mitered corners
- Best-of-class fit and finish for high-end display

SPECIFICATIONS

- Lenses – 1/16" clear + 1/8" diffused white
- Lamps – T8 cool white fluorescent
- Power – 120VAC, 60Hz
- Cord – 8 ft. black grounded, or hardwire

OPTIONS

- Anodized silver or powdercoat color finish
- Dimmable circuit
- Custom-sizeable, no minimum quantity
- Power cord exit location
- Eyebolts for overhead hanging

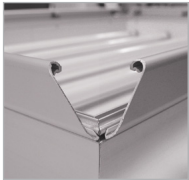


BLUE RIVER DIGITAL

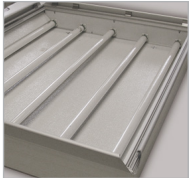
display brilliance

SnapLyte Premium

PRODUCT SNAPSHOT



CORNER OPEN



INSIDE



BACK

INDOOR/OUTDOOR

indoor

DISPLAY SIDES

single-sided

CHASSIS DEPTH

3-3/4"

LOADING METHOD

front-loading snap frame

CONSTRUCTION

extruded aluminum

UL LISTING

yes

CUSTOM-SIZEABLE

yes

STD. LEAD TIME

7 working days*

PRODUCT POSITION

Robust frame style and customizability for front-loading, upscale retail and architectural applications

DIMENSIONS

Graphic Size	Outside Dimensions	Viewable Area	Case Depth	Frame Width	Net Weight	Ship Weight
11 x 14"	13 x 16"	10-1/4 x 13 1/4"	3-3/4"	1-3/8"	9 lbs.	10 lbs.
16 x 20"	18 x 22"	15-1/4 x 19 1/4"	3-3/4"	1-3/8"	15 lbs.	17 lbs.
20 x 24"	22 x 26"	19-1/4 x 23 1/4"	3-3/4"	1-3/8"	19 lbs.	21 lbs.
20 x 30"	22 x 32"	19-1/4 x 29 1/4"	3-3/4"	1-3/8"	22 lbs.	24 lbs.
22 x 28"	24 x 30"	21-1/4 x 27 1/4"	3-3/4"	1-3/8"	23 lbs.	25 lbs.
24 x 24"	26 x 26"	23-1/4 x 23 1/4"	3-3/4"	1-3/8"	21 lbs.	23 lbs.
24 x 30"	26 x 32"	23-1/4 x 29 1/4"	3-3/4"	1-3/8"	23 lbs.	25 lbs.
24 x 36"	26 x 38"	23-1/4 x 35 1/4"	3-3/4"	1-3/8"	27 lbs.	30 lbs.
24 x 48"	26 x 50"	23-1/4 x 47 1/4"	3-3/4"	1-3/8"	35 lbs.	38 lbs.
24 x 60"	26 x 62"	23-1/4 x 59 1/4"	3-3/4"	1-3/8"	41 lbs.	44 lbs.
30 x 30"	32 x 32"	29-1/4 x 29 1/4"	3-3/4"	1-3/8"	26 lbs.	29 lbs.
30 x 40"	32 x 42"	29-1/4 x 39 1/4"	3-3/4"	1-3/8"	36 lbs.	39 lbs.
36 x 36"	38 x 38"	35-1/4 x 35 1/4"	3-3/4"	1-3/8"	39 lbs.	42 lbs.
36 x 48"	38 x 50"	35-1/4 x 47 1/4"	3-3/4"	1-3/8"	43 lbs.	47 lbs.
43 x 62"	45 x 64"	42-1/4 x 61 1/4"	3-3/4"	1-3/8"	72 lbs.	76 lbs.



This model is also custom-sizeable. To receive a quote for custom sizes, [visit our Custom Lightbox Quote Request page](#).

* The information contained in this document is not intended nor guaranteed for contract nor design purposes. Some combinations of options may not be available. Stated lead time is a target only; actual lead time depends on options, order quantity and current production loads. Any specifications critical to your project must be verified via formal written quote from Blue River Digital. Blue River Digital Inc. assumes no liability for loss or damage related to the accuracy of data published herein.