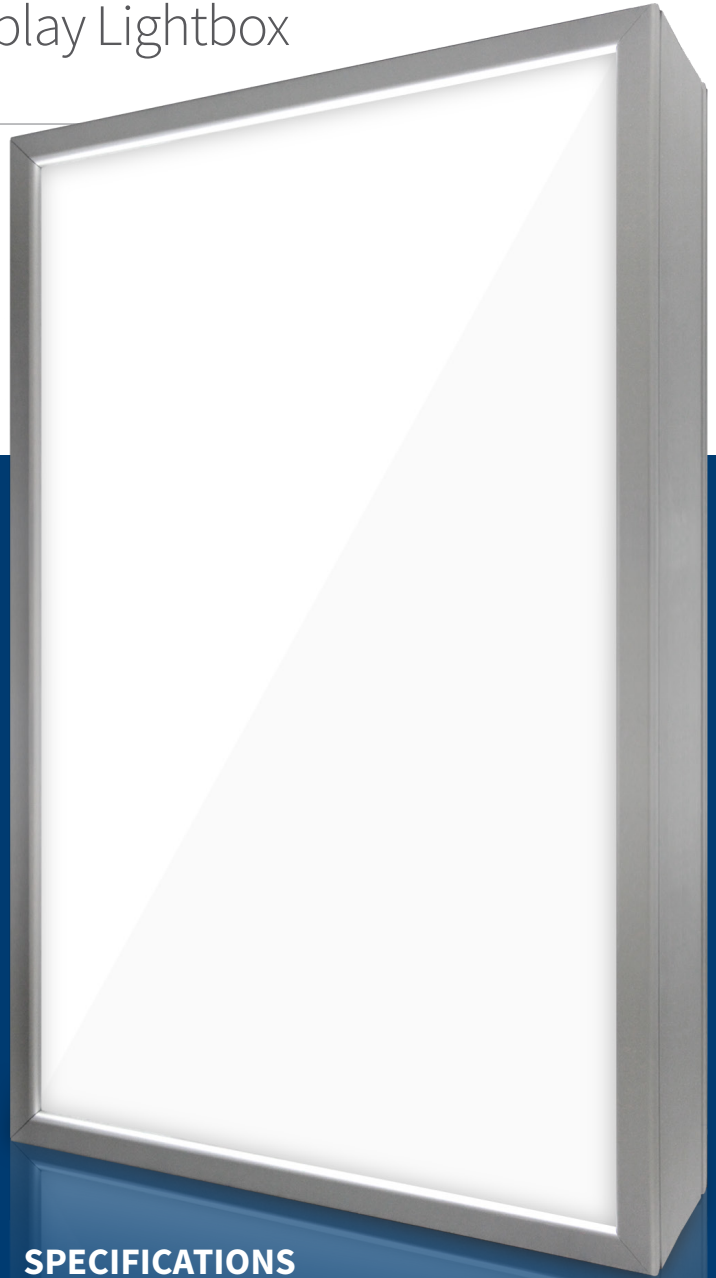


SnapLyte Premium Duo™

Graphic Display Lightbox

Showcase-grade front-loading
double-sided aluminum lightbox



FEATURES

- Premium-quality extruded aluminum construction
- Tool-free snap frame for quick graphics change
- Electronic ballasts for flicker/hum-free operation
- Substantive “boxy” look, for robust décor environments
- Precision mitered corners
- Best-of-class fit and finish for high-end display

OPTIONS

- Anodized silver or powdercoat color finish
- Dimmable circuit
- Custom-sizeable, no minimum quantity
- Power cord exit location
- Eyebolts for overhead hanging

SPECIFICATIONS

- Lenses – 1/16" clear + 1/8" diffused white
- Lamps – T8 cool white fluorescent
- Power – 120VAC, 60Hz
- Cord – 8 ft. black grounded, or hardwire

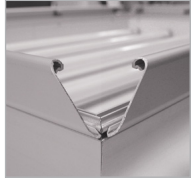


BLUE RIVER DIGITAL

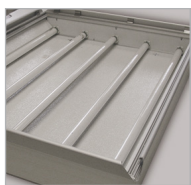
display brilliance



CORNER



CORNER OPEN



INSIDE

SnapLyte Premium Duo

PRODUCT SNAPSHOT

INDOOR/OUTDOOR	indoor
DISPLAY SIDES	double-sided
CHASSIS DEPTH	5"
LOADING METHOD	front-loading snap frame
CONSTRUCTION	extruded aluminum
UL LISTING	yes
CUSTOM-SIZEABLE	yes
STD. LEAD TIME	7 working days*
PRODUCT POSITION	robust frame style and customizability for double-sided, upscale retail and architectural applications

DIMENSIONS

Graphic Size	Outside Dimensions	Viewable Area	Frame Width	Case Depth	Net Weight	Ship Weight
16 x 20"	18 x 22"	15-1/4 x 19-1/4"	1-19/50"	5"	16 lbs.	22 lbs.
20 x 24"	22 x 26"	19-1/4 x 23-1/4"	1-19/50"	5"	22 lbs.	27 lbs.
20 x 30"	22 x 32"	19-1/4 x 29-1/4"	1-19/50"	5"	27 lbs.	32 lbs.
22 x 28"	24 x 30"	21-1/4 x 27-1/4"	1-19/50"	5"	28 lbs.	33 lbs.
24 x 24"	26 x 26"	23-1/4 x 23-1/4"	1-19/50"	5"	26 lbs.	31 lbs.
24 x 30"	26 x 32"	23-1/4 x 29-1/4"	1-19/50"	5"	32 lbs.	37 lbs.
24 x 36"	26 x 38"	23-1/4 x 35-1/4"	1-19/50"	5"	38 lbs.	43 lbs.
24 x 48"	26 x 50"	23-1/4 x 47-1/4"	1-19/50"	5"	48 lbs.	53 lbs.
24 x 60"	26 x 62"	23-1/4 x 59-1/4"	1-19/50"	5"	60 lbs.	65 lbs.
30 x 30"	32 x 32"	29-1/4 x 29-1/4"	1-19/50"	5"	37 lbs.	42 lbs.
30 x 40"	32 x 42"	29-1/4 x 39-1/4"	1-19/50"	5"	53 lbs.	58 lbs.
36 x 36"	38 x 38"	35-1/4 x 35-1/4"	1-19/50"	5"	53 lbs.	58 lbs.
36 x 48"	38 x 50"	35-1/4 x 47-1/4"	1-19/50"	5"	62 lbs.	67 lbs.



This model is also custom-sizeable. To receive a quote for custom sizes, [visit our Custom Lightbox Quote Request page](#).

* The information contained in this document is not intended nor guaranteed for contract nor design purposes. Some combinations of options may not be available. Stated lead time is a target only; actual lead time depends on options, order quantity and current production loads. Any specifications critical to your project must be verified via formal written quote from Blue River Digital. Blue River Digital Inc. assumes no liability for loss or damage related to the accuracy of data published herein.