

# PanaLyte Econo LED™

## Graphic Display Lightbox

Double-sided, floor-standing  
lightbox display with curved face

### FEATURES

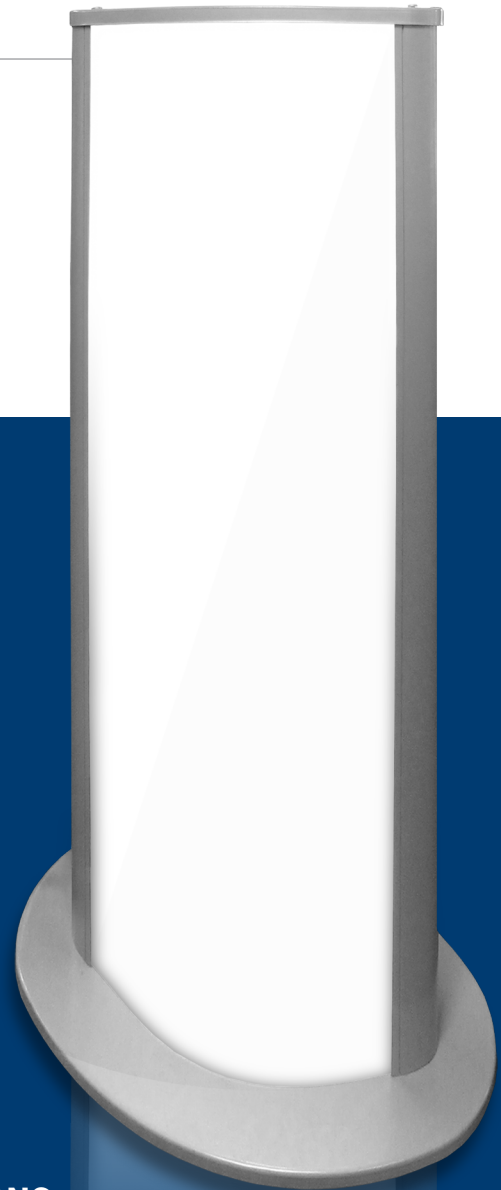
- New! long-lasting, low-power LED lamps
- Progressive curved-design face for wider viewable angle
- Easy-load graphics via top panel
- Extruded aluminum chassis for durability
- Clear + white diffuser acrylic lenses included

### SPECIFICATIONS

- Brightness 3200-3500 lumens
- Frame-mounted on/off switch
- 6.5 ft. AC power cord
- Full UL listing for fire safety
- 1-year ltd. warranty

### OPTIONS

- Standard or jumbo size
- Optional 360° rotating base (13 x 59" size only)
- Carrying case with or without wheels

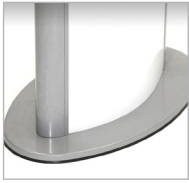


**BLUE RIVER DIGITAL**

*display brilliance*

# PanaLyte Econo LED

## PRODUCT SNAPSHOT



BASE



ROTATE OPTION

INDOOR/OUTDOOR

indoor

DISPLAY SIDES

double-sided

LOADING METHOD

slide-in through top panel

CONSTRUCTION

extruded aluminum

UL LISTING

components only

CUSTOM-SIZEABLE

no

STD. LEAD TIME

3 working days\*

PRODUCT POSITION

free-standing, double-sided, curved-face  
lighted display kiosk

## DIMENSIONS

Graphic Size	Outside Dimensions	Viewable Area	Case Depth	Ship Weight
13 x 59"	19 x 60-1/2 x 11"	12 x 58-19/50"	11"	28 lbs.
18 x 72"	23-5/8 x 29-5/8"	15-3/4 x 71-13/100"	12"	28 lbs.

\* The information contained in this document is not intended nor guaranteed for contract nor design purposes. Some combinations of options may not be available. Stated lead time is a target only; actual lead time depends on options, order quantity and current production loads. Any specifications critical to your project must be verified via formal written quote from Blue River Digital. Blue River Digital Inc. assumes no liability for loss or damage related to the accuracy of data published herein.